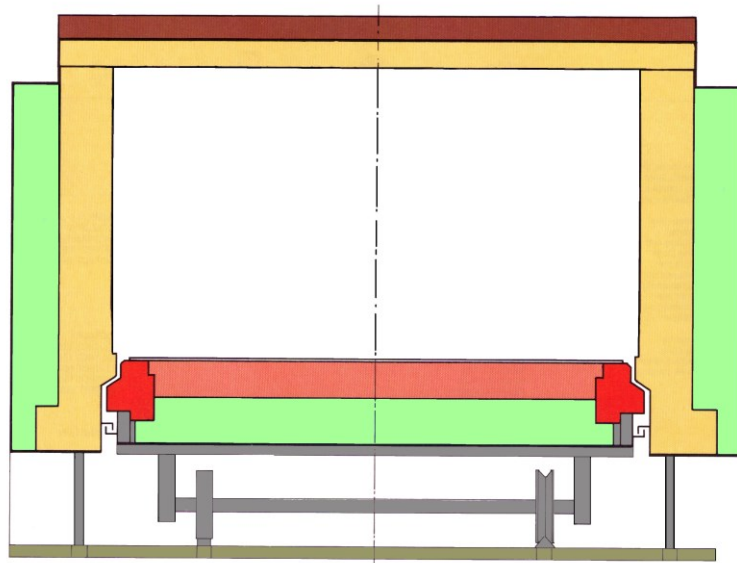


Eschweiler, den 20. Juni 2014

**Herdwagenofen**



	Stein	HT - Isolierung	Massen
<b>Ofeninnenwände</b>	ULTRA 42 – E ULTRA K – E	ISOTHERM 07/126 TS ISOTHERM 09/143 TS ISOTHERM 09/154 TC ISOTHERM 10/165 T ISOMAT ... - Matten ISOMAT ... - Module	PYRORAM 40/145 PYRORAM 50/150 CH PYROCAST 35/135 PYROCAST 55/160 T PYROCAST 80/160 B
<b>Herdwagenplateau</b>	ANCOR 60 S ANCOR 65 S STONA 80	ISOTHERM 07/126 TS ISOTHERM 09/143 TS ISOTHERM 09/154 TC ISOTHERM 10/165 T	PYROCAST 80/160 VK PYROCAST 34/155 SiC PYROCAST 55/152 T PYROCAST 40/130 T ISOCAS 13/135
<b>Herdwagenkranz</b>	ANCOR 60 S ANCOR 65 S	ISOTHERM 09/143 TS ISOTHERM 12/142	PYROCAST 40/130 T ISOCAS 13/135
<b>Deckenisolierung</b>	ISOTHERM 07/126 TS ISOTHERM 09/143 TS ISOTHERM 09/154 TC ISOTHERM 10/165 T	POROCAS 04/100 POROCAS 05/100 V	POROCAS 06/100 POROCAS 07/125
<b>Isolierung</b>		MOLER 45/ 90 D MOLER 50/ 90 D ISOMAT ... - Matten ISOMAT ... - Module	POROCAS 06/100 POROCAS 07/125